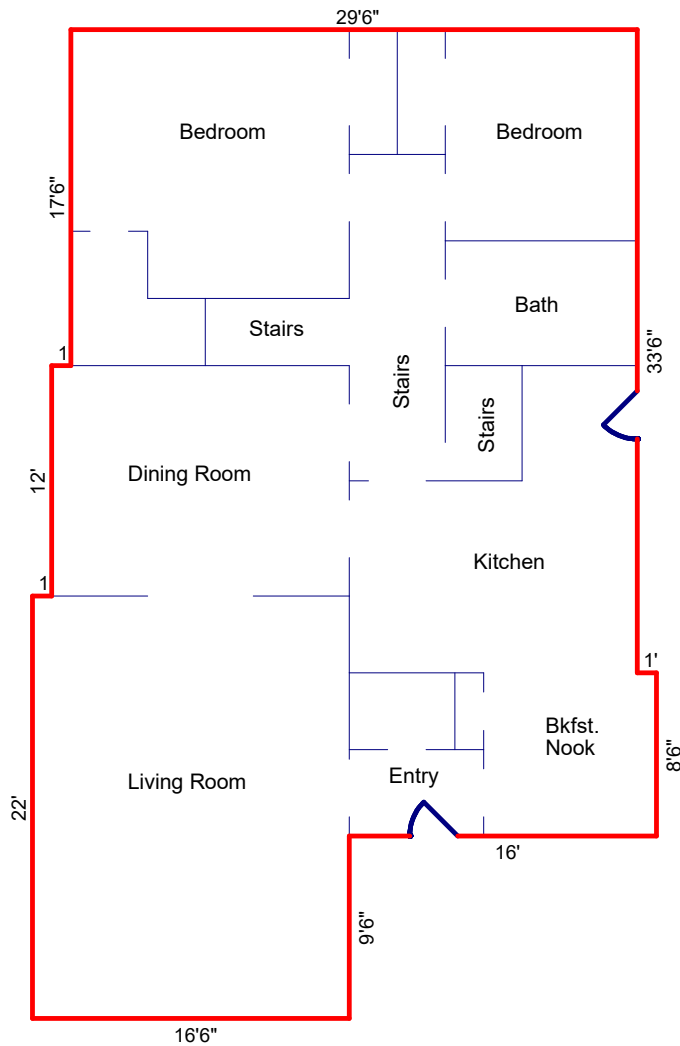
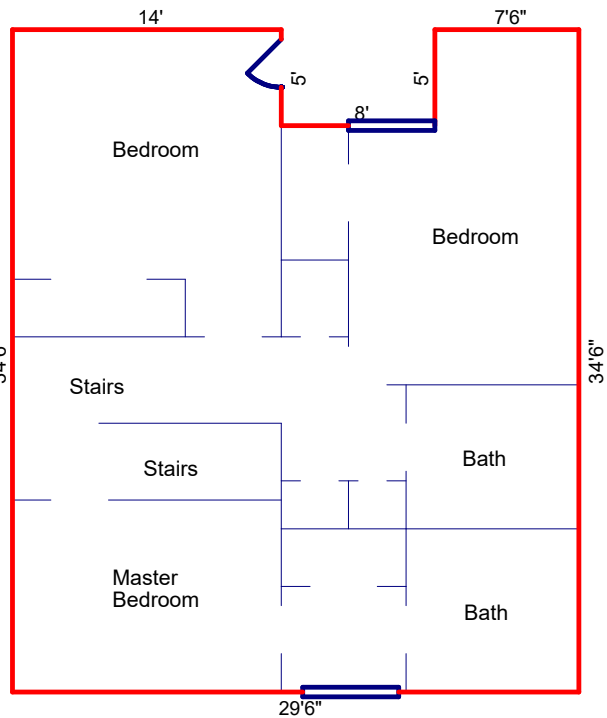


# 5851 MORPETH STREET, OAKLAND

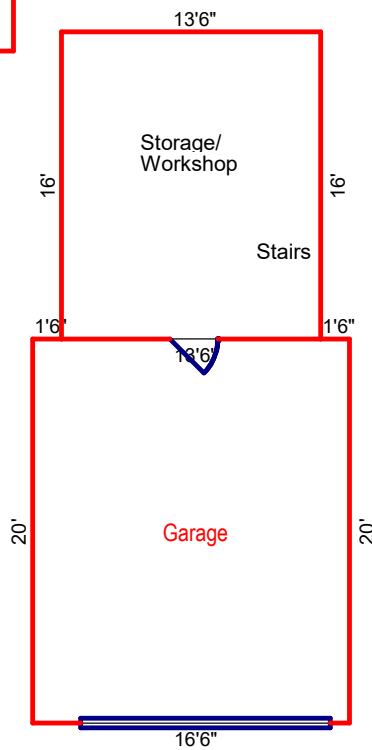
## FIRST FLOOR\*



## SECOND FLOOR\*



## BASEMENT



Prepared by Adam M. Lehman  
 CA State Cert. R.E. Appraiser  
 AR003634, on 03/23/2021

FIRST FLOOR*	SECOND FLOOR*	BASEMENT	
1 x 22 = 22	14 x 34.5 = 483	13.5 x 16 = 216	SF
1 x 34 = 34	8 x 29.5 = 236	Garage	
14.5 x 51.5 = 746.75	7.5 x 34.5 = 258.75	16.5 x 20 = 330	SF
15 x 42 = 630	Subtotal* 977.75	<b>Total</b> 546	<b>SF</b>
1 x 8.5 = 8.5		* Total G.L.A. 2419	<b>SF</b>
Subtotal* 1441.25	<b>Total*</b> 977.75	<b>Total OTHER</b> 546	<b>SF</b>
<b>Total*</b> 1441.25			